

INSTALLATION GUIDE

EN

TOOLS REQUIRED FOR INSTALLATION



ELECTRIC DRILL & DRILL BIT



SPIRIT LEVEL



CROSS POINT SCREWDRIVER



METRIC RULER



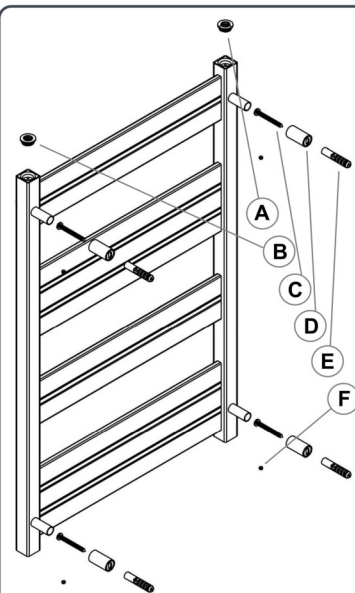
HAMMER



STEP LADDER (FOR HIGH PRODUCTS)



ALLEN KEY



Installation information in this section includes below products:

APUS, BODES, LACERTA

CONTENT OF MOUNTING SET

Air Vent (x1)



Blind Plug (x1)



*The mounting element - Blind Plug (B) is not included in the BODES model mounting set due to its design.

Wall Mounting Screw (x4)



Wall Mounting Bracket (x4)



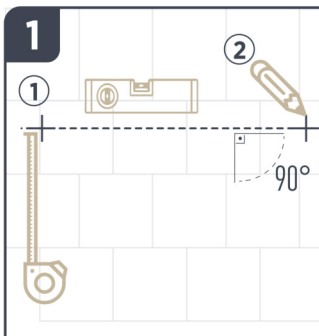
Wall Plug (x4)



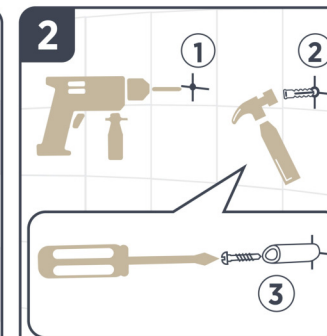
Setscrew (x4)



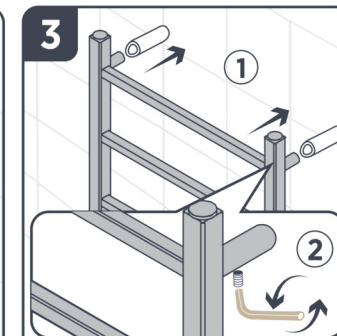
INSTALLATION



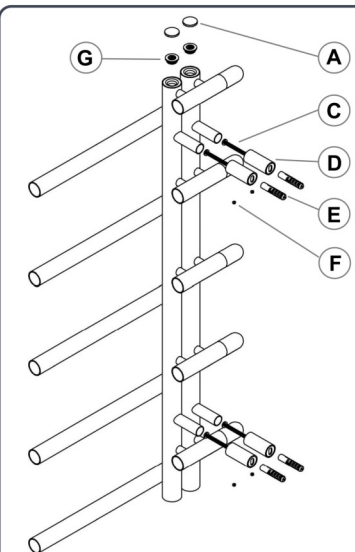
- 1- Specify the installation location of your radiator by using a metric ruler.
- 2- Set the location of your radiator as desired, align by using a spirit level and mark the position of the wall mounting brackets.



- 1- Drill holes (Ø 10 mm) into the spots you have marked.
- 2- Nail the wall plugs (E) in the holes by using a hammer.
- 3- Screw the wall mounting brackets all the way to the holes with the help of a screwdriver.



- 1- Place your radiator into the wall mounting brackets (D).
- 2- Insert the setscrews (F) into the slots on the mounting brackets (D), adjust the distance between the wall and your radiator then tighten the setscrews by using an Allen key (M3).



Installation information in this section includes below products:

VIRGO

CONTENT OF MOUNTING SET

Decorative Cap (x2)



Wall Mounting Screw (x4)



Wall Mounting Bracket (x4)



Wall Plug (x4)



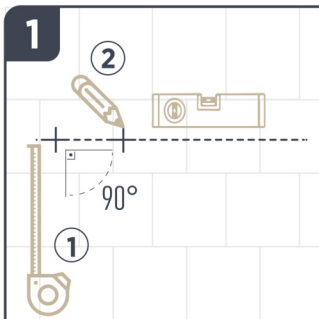
Setscrew (x4)



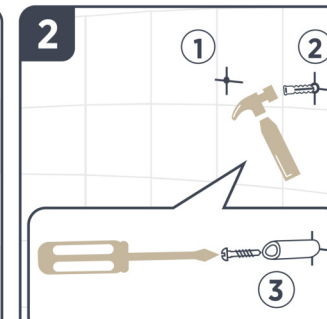
Air Vent (x2)



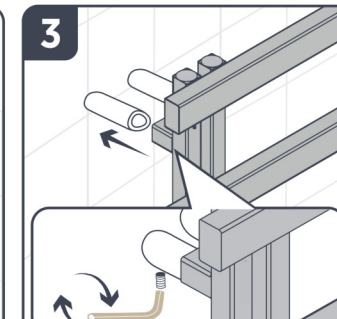
INSTALLATION



- 1- Specify the installation location of your radiator by using a metric ruler.
- 2- Set the location of your radiator as desired, align by using a spirit level and mark the position of the wall mounting brackets.



- 1- Drill holes (Ø 10 mm) into the spots you have marked.
- 2- Nail the wall plugs (E) in the holes by using a hammer.
- 3- Screw the wall mounting brackets all the way to the holes with the help of a screwdriver.



- 1- Place your radiator into the wall mounting brackets (D).
- 2- Insert the setscrews (F) into the slots on the mounting brackets (D), adjust the distance between the wall and your radiator then tighten the setscrews by using an Allen key (M3).



WARNING

- Place your radiator at least 12.5 cm above the floor.
- If necessary, apply sealant to the threads of the installed valves.
- Connect your radiator to the central heating system after following all the installation steps in the manual.
- After connecting to the central heating system, do not forget to discharge the trapped air inside the radiator.

WarmDesign



23.02.2024 Rev:EN02



CAUTION: Hot surface.

THESE INSTRUCTIONS SHOULD BE READ CAREFULLY, AND RETAINED FOR FUTURE REFERENCE

Radiator must be installed only by qualified installers and installation must be compliant with all applicable rules, and national safety regulations and laws in force in the country where the product is installed.

CAUTION - Some parts of this product can become very hot and cause burns. Particular attention has to be given where children and afflicted people are present.

During operation the radiator surface will get hot, however momentary contact with any part of it should not cause any injury.

In case the radiator is used in a public place, a warning should be placed next to it advising the hot surface.

OPERATION AND MAINTENANCE

Radiators are heavy items and should be securely fastened to the wall. In all cases, it is strongly recommended that a suitably qualified professional carries out the installation. Specific care should be taken into consideration, including the fixing method used to secure the radiator to the wall, the type and the condition of the wall itself, and any additional potential forces or weights, prior to finalising installation.

The wall plugs supplied with your radiator may not be suitable for your wall type. The appropriate wall plugs should be chosen by your installer.

The product is suitable for a maximum working pressure of up to 10 bar, depending on the specific model of the radiator.

When the air is trapped within the radiator, it may cause inefficient warming. The air vent should be loosened to release the air. When the water starts to come out, the air vent must be retightened.

To clean the product, use a slightly wetted piece of a soft cloth. DO NOT use harsh chemicals, cleaning solvents, bleaches, strong detergents, especially those containing hydrochloric acid or scourers.

The water in the system should not contain substances such as chlorine and halogen salts. Halogen salts and chlorine can cause corrosion in your radiator.

Radiators are designed to operate between 0 °C and 95 °C. DO NOT use in open air environments.

Radiators are for hanging and drying textile products, do not use out of purpose. Do not hold onto, get support or climb on it. Do not extend the usage area of the radiator with additional apparatus.

GUARANTEE

Guarantee conditions comply with the directive 1999/44/EC of the European Parliament and of the Council of 25 May 1999 on certain aspects of the sale of consumer goods and associated guarantees.

Guarantee conditions do not apply in below explained conditions:

- non-compliance with the operating instructions given by the manufacturer in the "OPERATION AND MAINTENANCE" sections of this document during the use of the product,
- modification or repair of the product by parties other than the manufacturer,
- damaged caused intentionally, by negligence or by accident during transportation, installation or at any stage of the product's life cycle,
- insufficient circulation of water in the radiator caused by violation of assembling and installation instructions as well as by specific characteristics of the heating system.

- symptoms of electrochemical corrosion,
- other damages arising in the device due to the Customer's fault after the receipt of the device.

The guarantee does not cover claims arising from technical and operational characteristics of the device, if they are given in the installation guide, user manual and technical specifications of the device.

The guarantee does not cover all actions which are mentioned in the installation guide and user manual that must be done by customer at his own expense.

The duty of the Customer is to check whether the wrapping is not damaged, what may indicate a problem with the device at the time of purchase or during transport. Defects of the radiator (damage, wastage, improper quality of the coating finish, etc..) visible with the naked eye should be reported by the Customer to the Guarantor within 3 days from reception of the radiator. This kind of defects reported after installing the devices will not be subject of a complaint.

The complainant is obliged to dismantle the radiator as well as subsequent installation on his own and at his own expense. The guarantee does not cover the cost of removing and installing the device.

In order to consider the complaint the Guarantor may examine the device in the place of installation or other place indicated by the Guarantor. In that case, the device should be returned in the original manufacturer's packaging, to protect against the further damage.

The Guarantor will consider a claim within 14 working days. In the case of models or elements which require to send them to the manufacturer for inspection this period may be extended about what the Customer will be notified.

The Guarantor is obliged to remove all defects in the extend the complaint is accepted. In the first place defect will be repaired and if the repair is impossible or costs of repair are too high the defective product will be exchanged. The deadline to remove defects will be agreed with the Customer individually.

The guarantee period is 20 years for stainless steel radiators.

Guarantee period of valve and valve accessories purchased with radiator products is 2 years.

In the case of a complaint, the following information are required: model name, number (this can be found at the back of the product), nature of the fault and date of purchase. Please retain your receipt/invoice as proof of purchase.

A complaint report should include:

- Purchase and usage history: place and date of purchase, installation date, and when the defect occurred,
- Detailed description of the defects and circumstances of defect discovery,
- Clear photos: close-ups of the defect, a full photo of the product, and installation location,
- Photo of the QR code sticker on the back of the radiator.

NOTES FOR DISPOSAL OF THIS PRODUCT VALID FOR THE EUROPEAN UNION

Do not dispose of these products as unsorted domestic waste. Return the products to recycling to prevent possible harm to the environment or human health and to promote the sustainable reuse of material resources. Recycling information is available at the product retailer, local waste authorities or national organizations.

The producer is not liable for the misspellings and copying errors. The producer remains the right to make changes in the product. This document can not be copied completely or partially without the written permission of the producer.

For installation, please refer to the installation guide which comes along with the product.